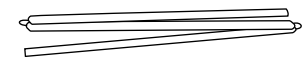
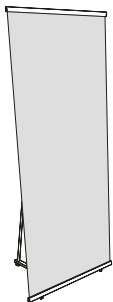


1. GRAPHIC ATTACHMENT

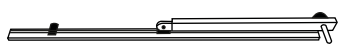


CONTENT



x1

Open the bag, check the content of the bag and take out all the pieces carefully.



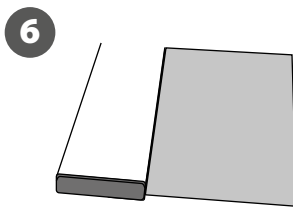
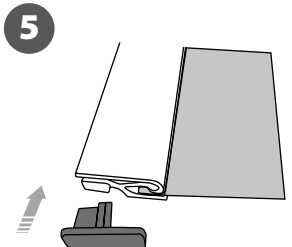
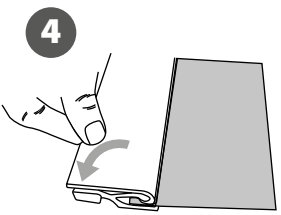
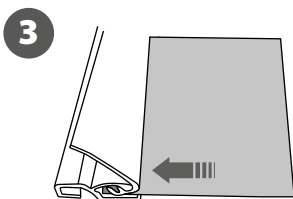
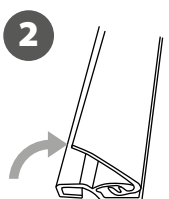
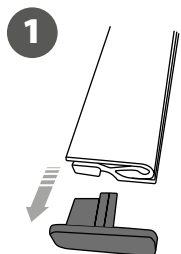
x1

To set-up the L-Banner, first you must attach its graphic (supplied separately) to the snap profiles following the **next steps** showed below.



x1

GRAPHIC ATTACHMENT **BY SNAP RAIL**



For those cases in which the graphic is **supplied by the client**, we recommend making use of the materials listed in the following **QR code** (scan for downloading Excel file). Please contact us or visit www.cashdisplay.com for more information.



2. SET UP THE L-BANNER **STRUCTURE** AND GRAPHIC ATTACHMENT

