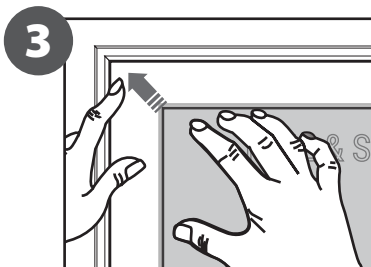
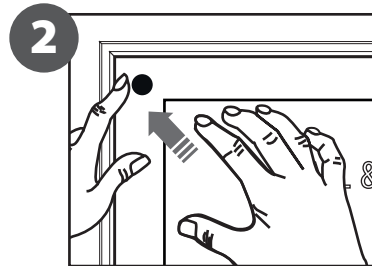
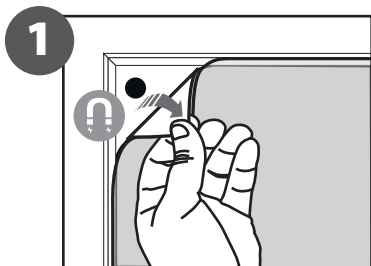


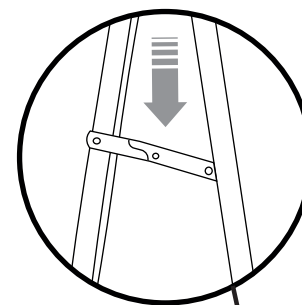
1. GRAPHIC + ANTIREFLECTION PROTECTOR **PLACEMENT**
CONTENT


Open and check the content of the boxes and take out all the pieces carefully.

For setting-up the Sidewalk Board, you must place its graphics (supplied separately) to the Frame following the **next steps** describe below.

GRAPHIC ATTACHMENT **BY MAGNETIC PROTECTOR**

For those cases in which the graphic is **supplied by the client**, we recommend making use of the materials listed in the following **QR code** (scan for downloading Excel file). Please contact us or visit www.cashdisplay.com for more information.

2. SET UP SIDEWALK BOARD **STRUCTURE**

ANTIREFLECTION
MAGNETIC GRAPHIC
PROTECTOR INCLUDED

