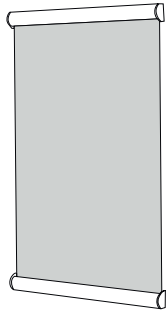


1. GRAPHIC + ANTIREFLECTION PROTECTOR PLACEMENT



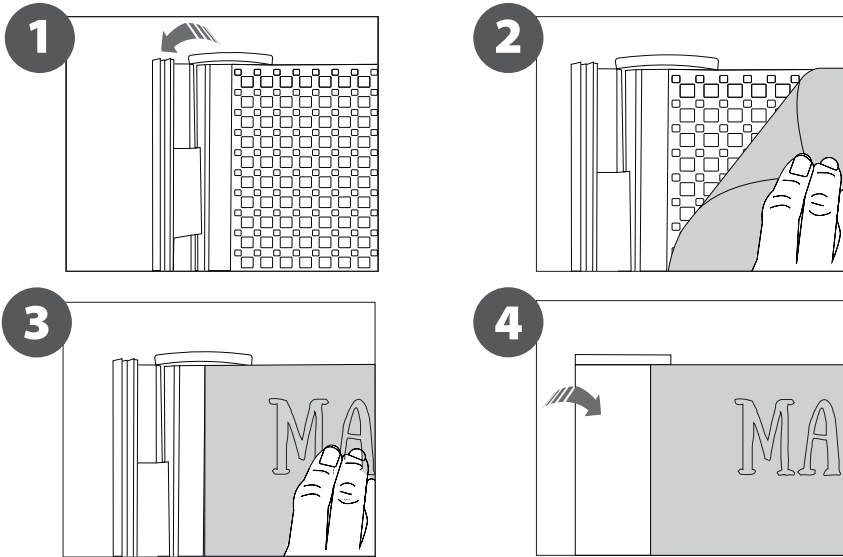
CONTENT



Open and check the content of the boxes and take out all the pieces carefully.

For setting-up frame, you must place its graphics (supplied separately) to the Click Frame following the next steps describe below. Antireflection protector and screws included.

GRAPHIC ATTACHMENT BY CLICK FRAME



For those cases in which the graphic is **supplied by the client**, we recommend making use of the materials listed in the following **QR code** (scan for downloading Excel file). Please contact us or visit www.cashdisplay.com for more information.



2. SET UP FRAME STRUCTURE

