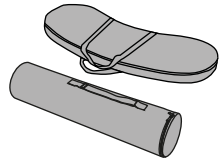
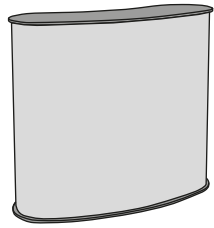
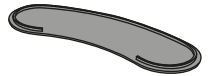


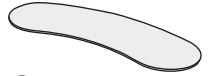
## 1. GRAPHIC ATTACHMENT


 CONTENT


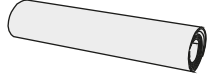
x1



x1



x1



x1



x2

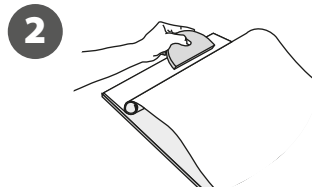
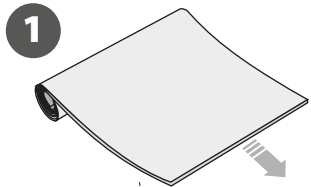
Open the bag, check the content of the bag and take out all the pieces carefully.

To set-up the Promotion counter, first you must attach its graphic (supplied separately) to the flexible panel following the **next steps** showed below.

Place the base on the floor and start the flexible panel application around the base. Once the panel is secured around the middle of the base, position the countertop and finish adjusting the panel.

Then place the metal stops on the inner recesses. Finally place the inner shelf on the metal stops.

## GRAPHIC ATTACHMENT



Adhesive Vinyl

For those cases in which the graphic is **supplied by the client**, we recommend making use of the materials listed in the following **QR code** (scan for downloading Excel file). Please contact us or visit [www.cashdisplay.com](http://www.cashdisplay.com) for more information.



## 2. SET UP THE STRUCTURE

